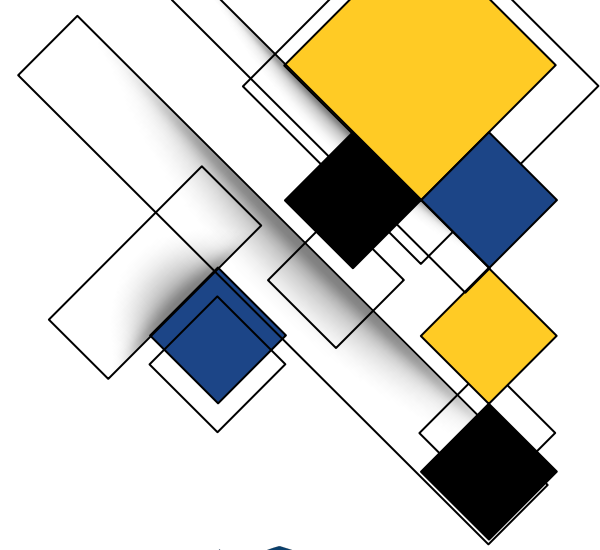


AIG SERVICES



LIGON MAGNET MIDDLE SCHOOL

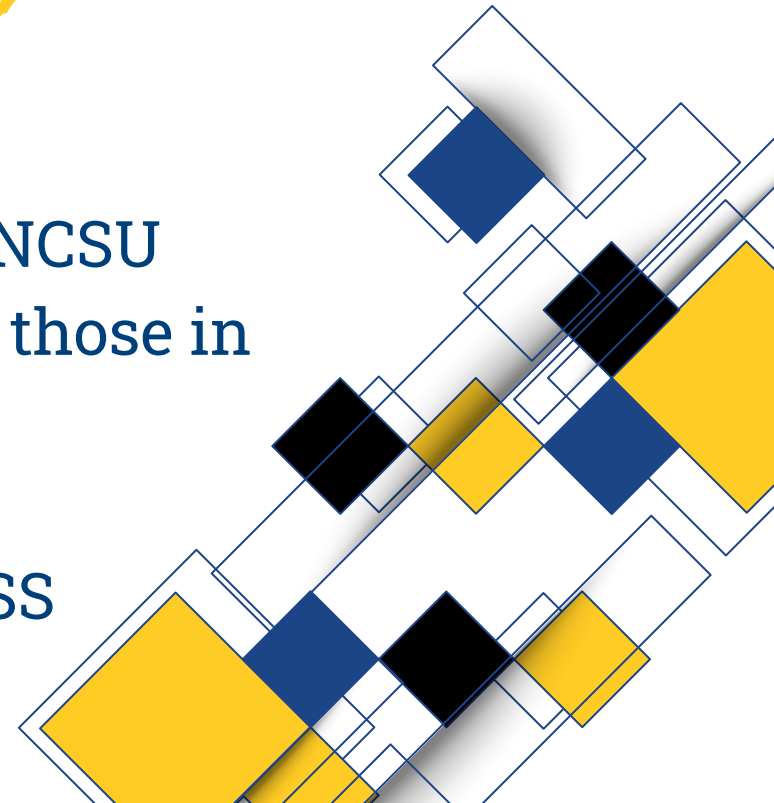
VIRTUAL OPEN HOUSE



MEET THE TEACHER

Amy Rogers

- Graduate of UNC-Chapel Hill and earned M Ed at NCSU
- Veteran teacher with 28 years of experience; 13 of those in middle school in Wake County
- Second year at Ligon Magnet MS
- Overseeing enrichment and services in ELA and SS

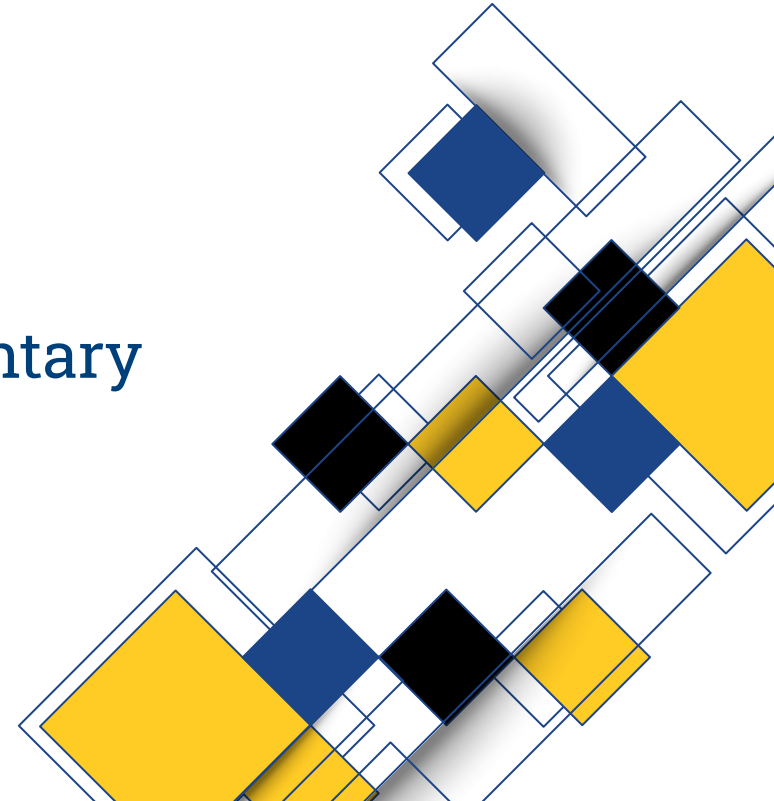




MEET THE TEACHER

Rebecca Wise

- Graduate of University of Kentucky
- Veteran teacher with 21 years of experience
- 13 years as AIG teacher in Wilson County, in elementary and middle schools
- First year at Ligon Magnet MS
- Overseeing enrichment and services in Math and Science

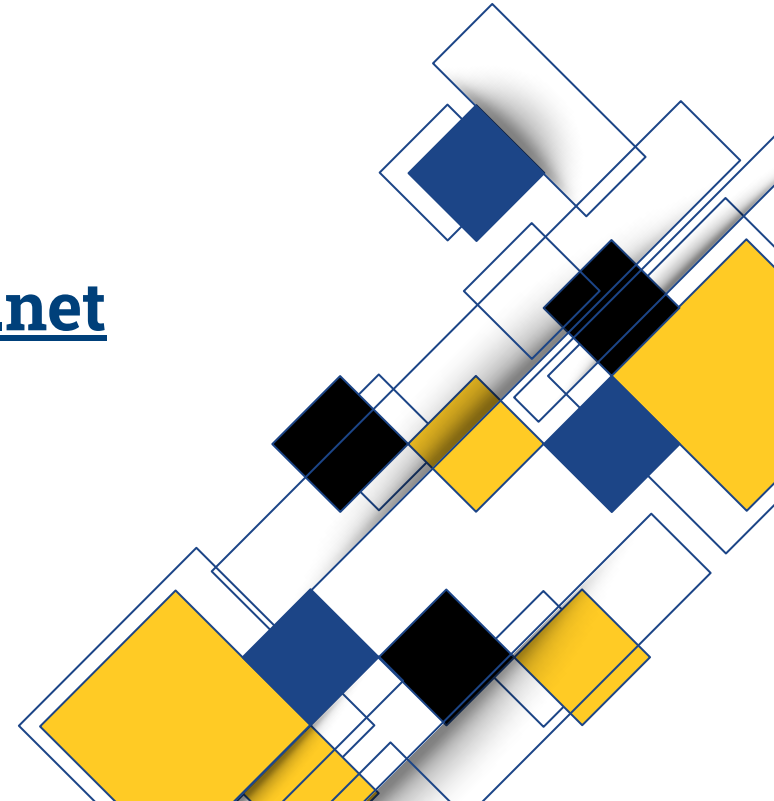


NOMINATION PROCESS

- Identification continues into middle school
- Nominations need to be in writing
- Form can be found on the website

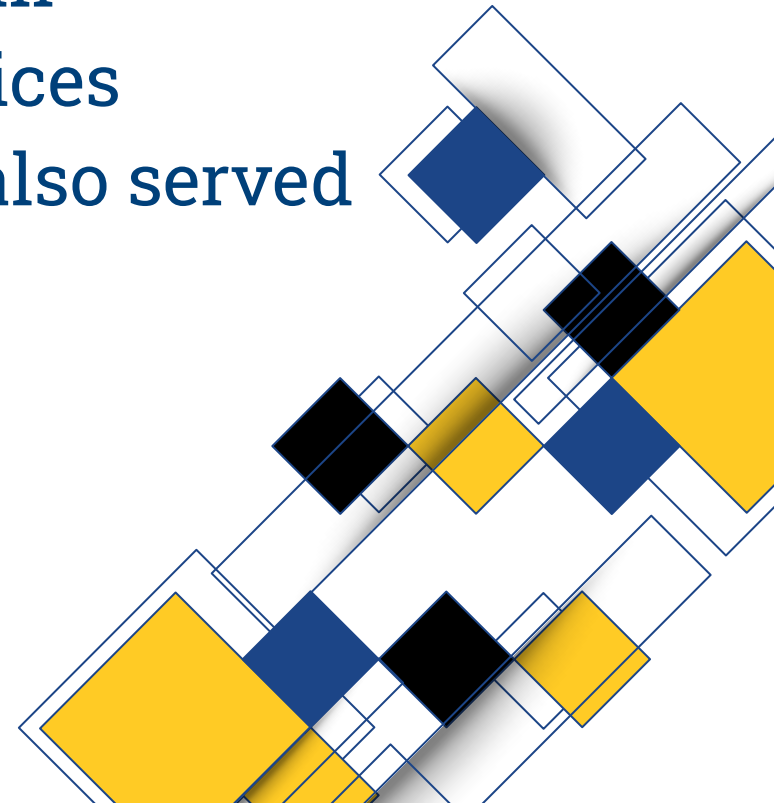
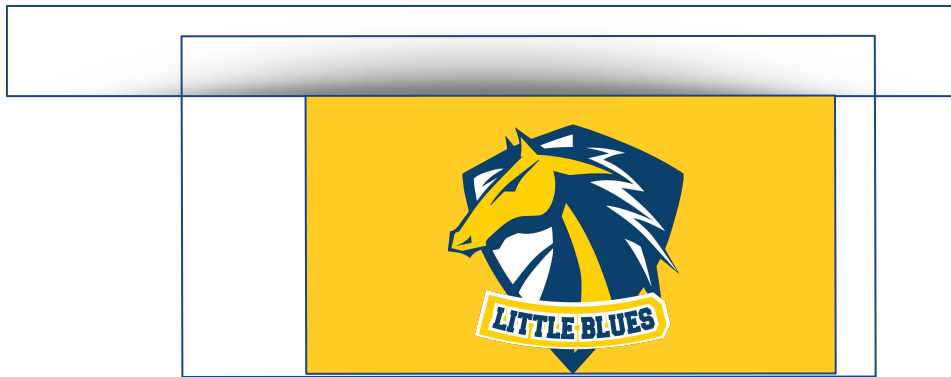
Contact: **Rebecca Wise**
rawise@wcpss.net

Amy Rogers
agrogers@wcpss.net



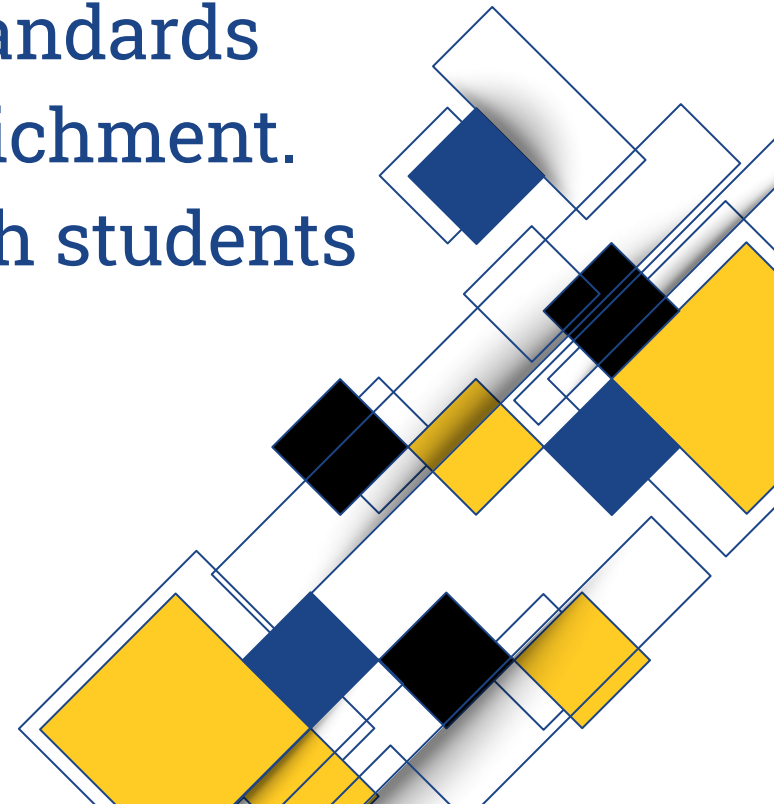
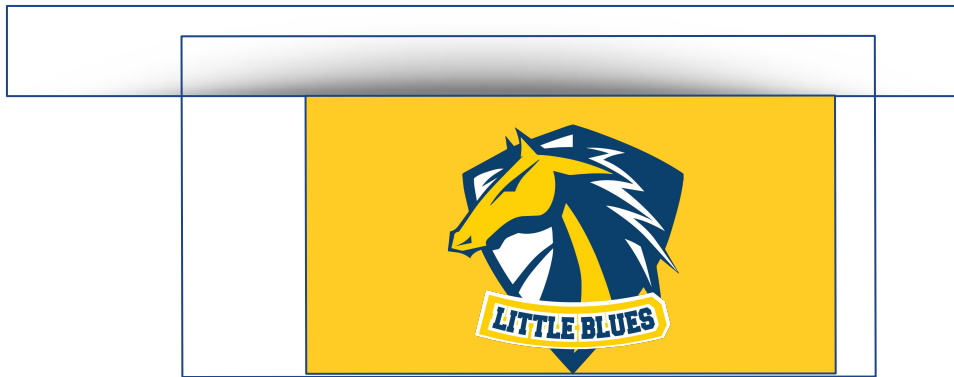
AIG DELIVERY MODEL

- Identified students served in large clusters in core courses
- AIG teachers coach and collaborate with core teachers to extend students beyond the standard curriculum
- AIG teachers provide push-in and pull-out services
- Students identified as Talent Development are also served with enrichment/differentiation groups



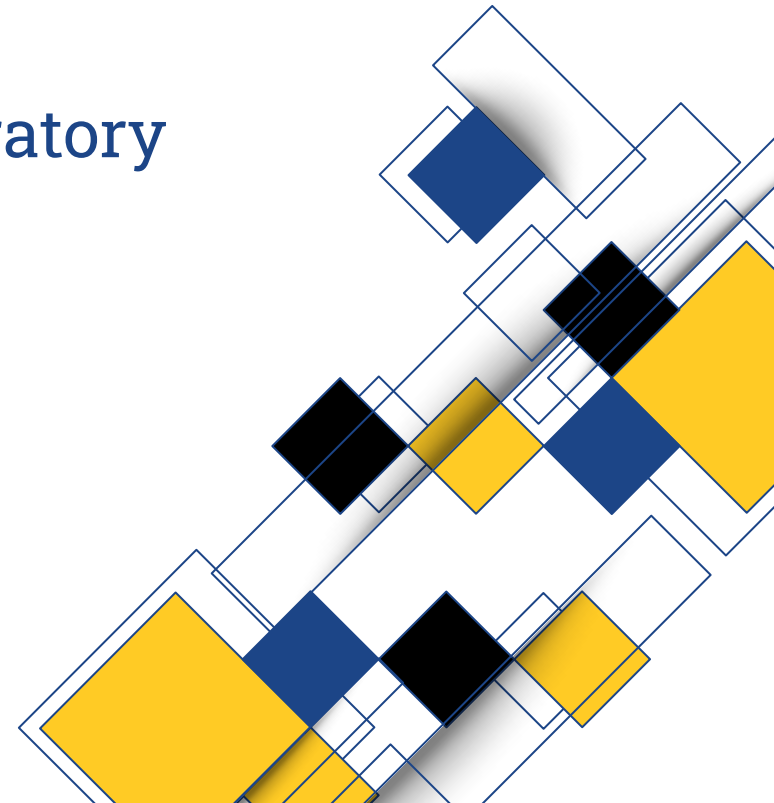
DIFFERENTIATED INSTRUCTION PUSH-IN SERVICES

- AIG teachers collaborate with core teachers to ensure lessons are extended beyond grade level standards and that opportunities are available for enrichment.
- AIG teachers join core teachers to work with students in small groups.



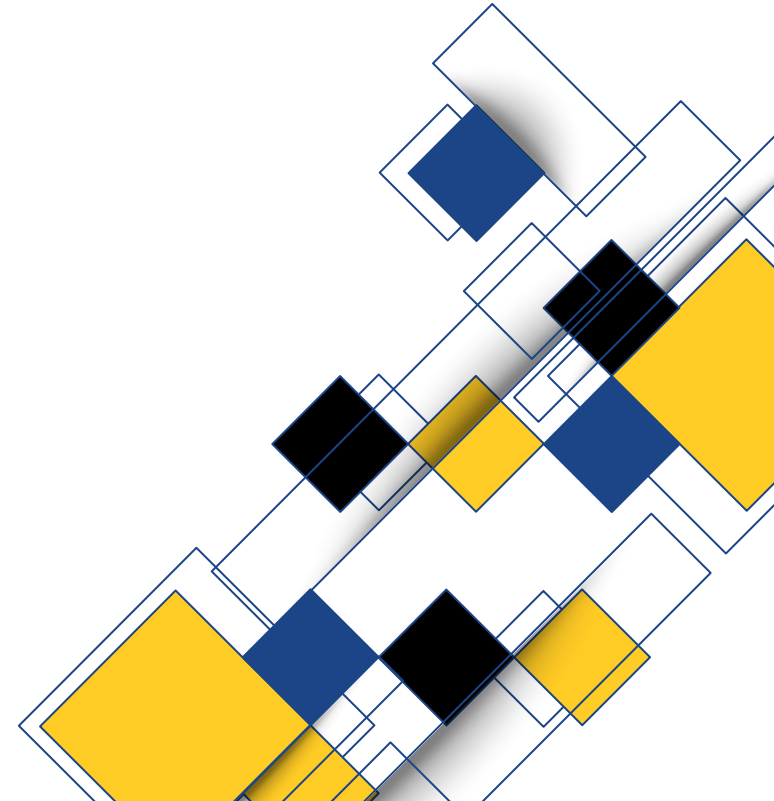
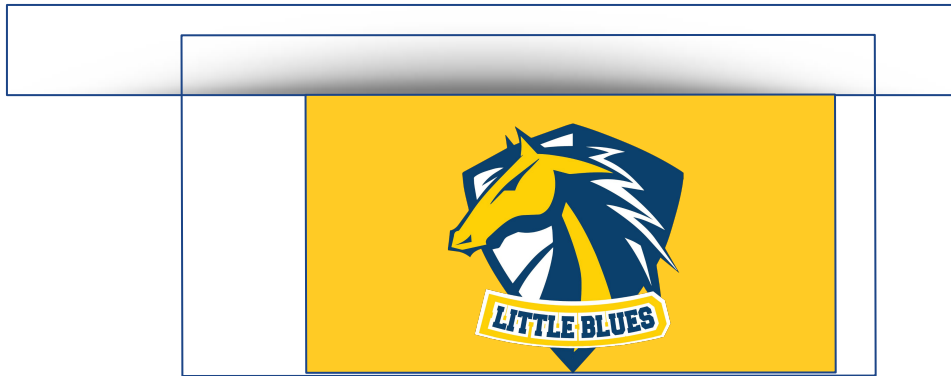
DIFFERENTIATED INSTRUCTION PULL-OUT SERVICES

- AIG identified students and Talent Development Students meet several times a semester for extension lessons during Exploratory Enrichment.
- Invitations for sessions are sent through the Exploratory Enrichment teacher.
- Ms. Wise provides Math and Science enrichment.
- Ms. Rogers provides ELA and SS enrichment.



AIG PROFESSIONAL DEVELOPMENT

- Characteristics of Gifted Students
- Gifted Education
- Differentiation



QUESTIONS?

Please visit the AIG pages on the Ligon website for more information.

